

## After surgery

- You can expect some discomfort after surgery.
- Your ophthalmologist will prescribe any necessary medications for you and advise you when to resume normal activity. You will need to wear an eye patch for a short time.
- Flashing lights and floaters may continue for a while after surgery.
- If a gas bubble was placed in your eye, your ophthalmologist may recommend that you keep your head in special positions for a time.
- **Do not fly in an airplane or travel high altitudes until you are told the gas bubble is gone!**  
*A rapid increase in altitude can cause a dangerous rise in eye pressure.*
- A change of eyeglasses is often helpful after several months.

## What are the risks of surgery?

Any surgery has risks; however, an untreated retinal detachment usually results in permanent, severe vision loss or blindness.

Some of the surgical risks include:

- Infection
- Bleeding
- High pressure in the eye
- Cataract

Most retinal detachment surgery is successful, although if the detachment is recurrent more operations are sometimes needed.

Some retinal detachments cannot be fixed. If the retina cannot be reattached,

the eye will continue to lose sight and ultimately become blind.

## Will your vision improve?

After a successful surgery, vision may take many months to improve and in some cases may never return fully. Unfortunately, some patients do not recover any vision.

The more severe the detachment, the less vision may return. For this reason, it is **very important** to see your ophthalmologist at the first sign of any trouble.

Compliments of  
Vatsal Doshi, MD, MPH and  
Boleslav Kotlyar, MD of

**Vitreous Retina Macula Specialists  
of New Jersey**



**VRM NJ** | VITREOUS RETINA MACULA  
SPECIALISTS OF  
NEW JERSEY

### Millburn

306 Main Street,  
2nd Floor  
Millburn, NJ 07041  
**P** (973) 467-2020  
**F** (973) 467-2030

### Somerset

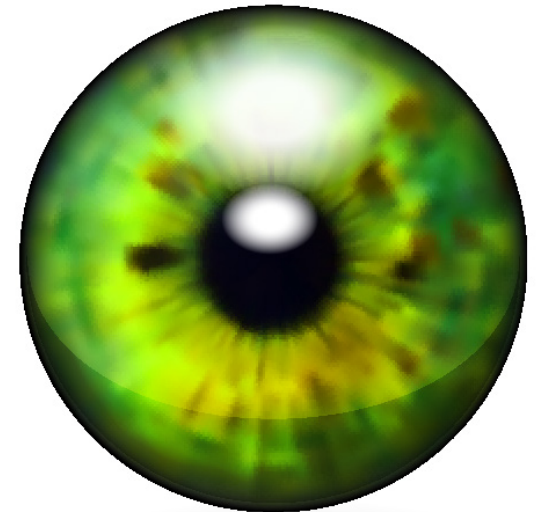
1543 Route 27,  
Suite 12  
Somerset, NJ 08873  
**P** (732) 839-0516  
**F** (732) 253-5259

**W** [vrmnjretina.com](http://vrmnjretina.com)  
**E** [retinamd@vrmnjretina.com](mailto:retinamd@vrmnjretina.com)



# Detached and Torn Retina

A Closer Look



**Patient Education**

The following conditions increase the chance of having a retinal detachment:

- Nearsightedness
- Previous cataract surgery
- Glaucoma
- Severe injury
- Previous retinal detachment in your other eye
- Family history of retinal detachment
- Weak areas in your retina that can be seen by your ophthalmologist (Eye M.D).

### What are the warning symptoms of retinal detachment?

These early symptoms may indicate the presence of a retinal detachment:

- Flashing lights
- New floaters
- A shadows in the periphery of your field of vision
- A gray curtain moving across your field or vision

These symptoms do not always mean a retinal detachment is present; however, you should see your ophthalmologist as soon as possible.



Your ophthalmologist can diagnose retinal detachment during an eye examination in which he or she dilates (enlarges) the pupils of your eye. Some retinal detachments are found during a routine eye examination. Only after careful examination can your ophthalmologist tell whether a retinal tear or early retinal detachment is present.

### What treatment is needed?

#### Retinal Tears

Most retinal tears need to be treated with laser surgery or cryotherapy (freezing), which seals the retina to the back wall of the eye.

These treatments cause little or no discomfort and may be performed in your ophthalmologist's office. Treatment usually prevents retinal detachment.

#### Retina Detachments

Almost all patients with retinal detachments require surgery to return the retina to its proper position.

### Types of surgery

There are several ways to fix a retinal detachment. The decision about which type of surgery and anesthesia (local or general) to use depends upon the characteristics of your detachment.

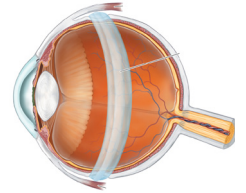
In each of the following methods, your ophthalmologist will locate the retinal tears and use laser surgery or cryotherapy to seal the tear.

#### Scleral Buckle

This treatment involves placing a flexible band (scleral buckle) around the eye to

counteract the force pulling the retina out of place.

The ophthalmologist often drains the fluid under the detached retina, allowing the retina to settle back into its normal position against the back wall of the eye. This procedure is performed in an operating room.



#### Pneumatic Retinopexy

In this procedure, a gas bubble is injected into the vitreous space inside the eye in combination with laser surgery or cryotherapy. The gas bubble pushes the retinal tear closed against the back wall of the eye.

Your ophthalmologist will ask you to maintain a certain head position for several days. The gas bubble will gradually disappear. Sometimes this procedure can be done in the ophthalmologist's office.

#### Vitrectomy

The surgery is performed in an operating room. The vitreous gel, which is pulling on the retina, is removed from the eye and usually replaced with a gas bubble.

Your body's own fluids will gradually replace the gas bubble.

Sometimes vitrectomy is combined with scleral buckle.

